

# ATEX HIGH INTENSITY MULTI-TONE ACOUSTIC SIRENS

## AE/IS-SI320A, AE/IS-SI320B

### Description

ATEX acoustic siren recommended for high level ambient noise applications.

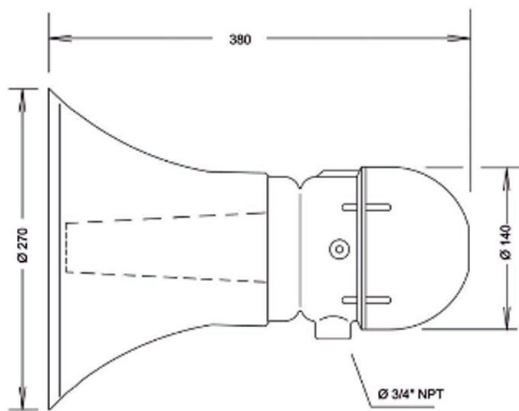
Certified for installation in ATEX areas 1, 21 and 2, 22

Provided with 32 selectable tones

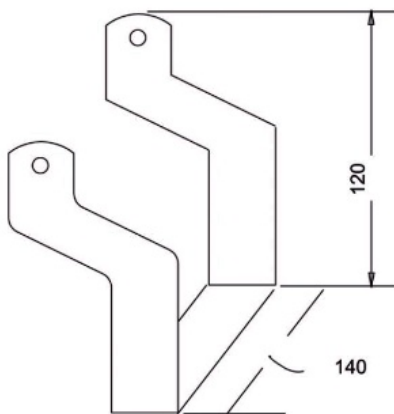
- Aluminum body and copper-free cover
- AISI 304 screws
- Ø 3/4 "ISO 7/1" inlet
- Degree of protection explosion proof:
  - II 2 G Ex dIIC or IIB + H2 T3 or T4 Gb
  - II 2 D Ex tB III T150°C or T130° Db
- Degree of protection: IP65



### Dimensions



### Mounting accessory



### TECHNICAL CHARACTERISTICS

#### AE/IS-SI320A

Power supply:	230 Vac 50/60 Hz
Power:	16w
Measurement range:	110 dB
Acoustic frequency:	440 ÷ 2000 Hz
Service:	Continuous
Weight:	3.7 Kg
Operating temperature:	-50 °C ÷ +60 °C

#### AE/IS-SI320B

Power supply:	12 ÷ 24 Vac / Vcc
Power:	16w
Measurement range:	110 dB
Acoustic frequency:	440 ÷ 2000 Hz
Service:	Continuous
Weight:	3.7 Kg
Operating temperature:	-50 °C ÷ +60 °C